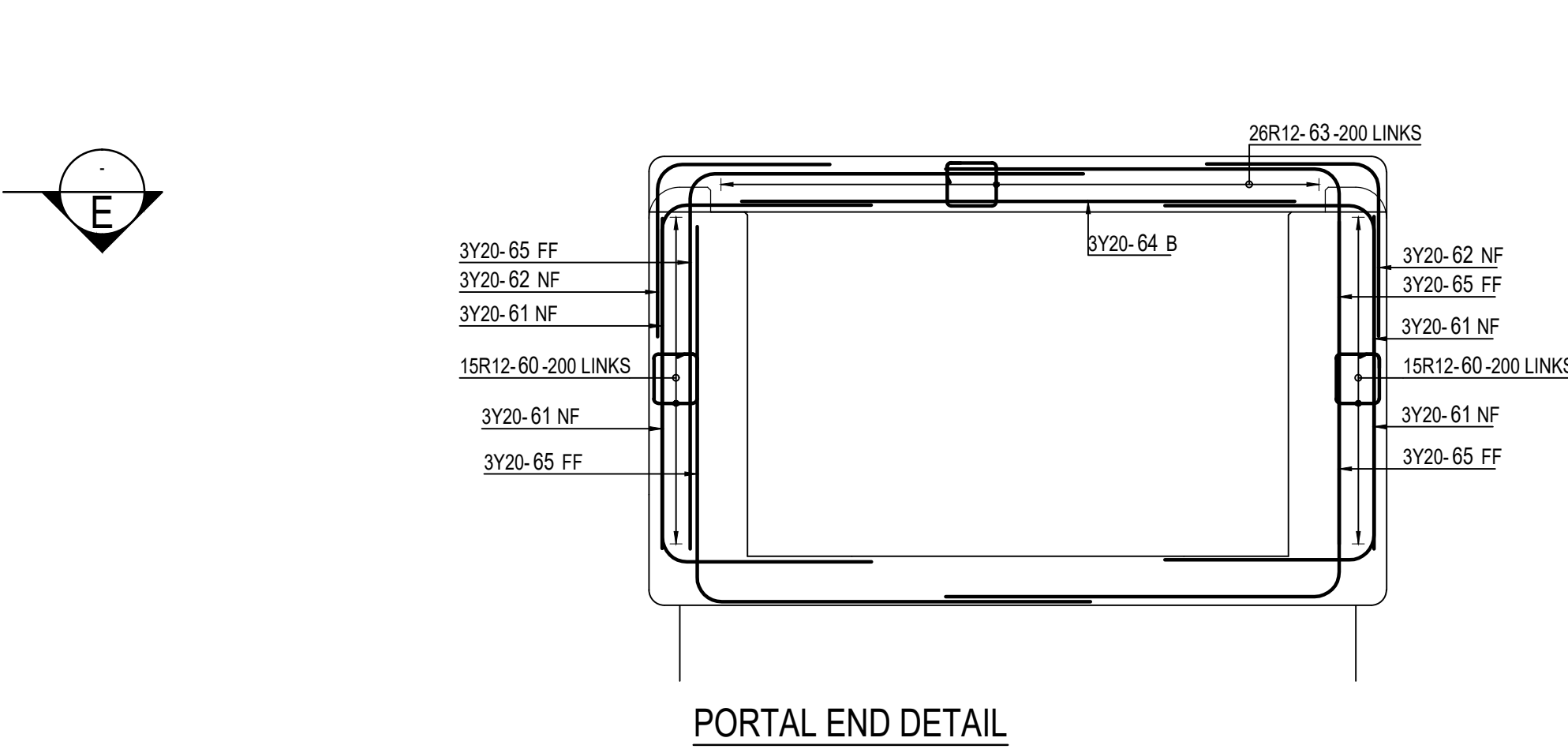
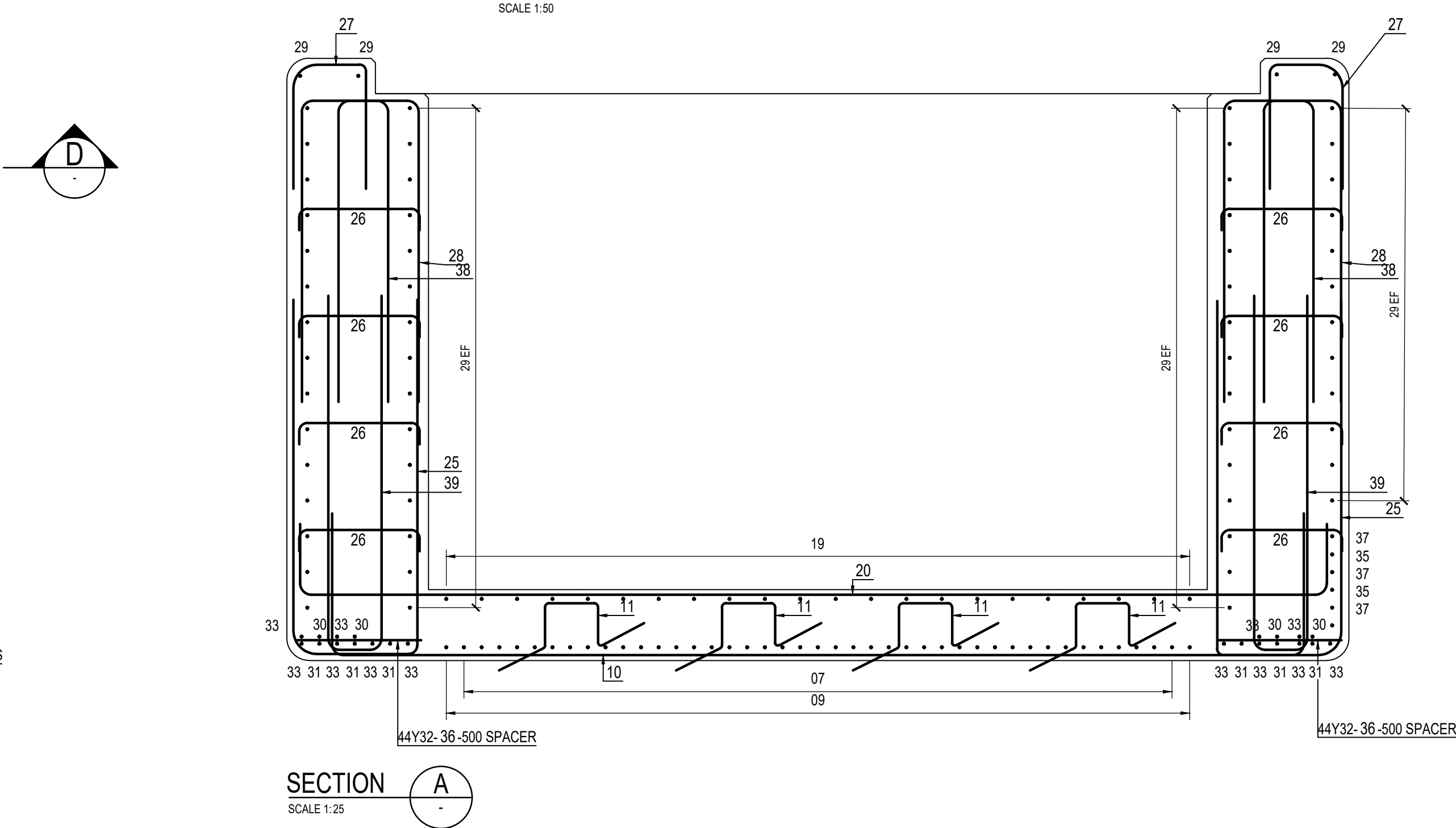


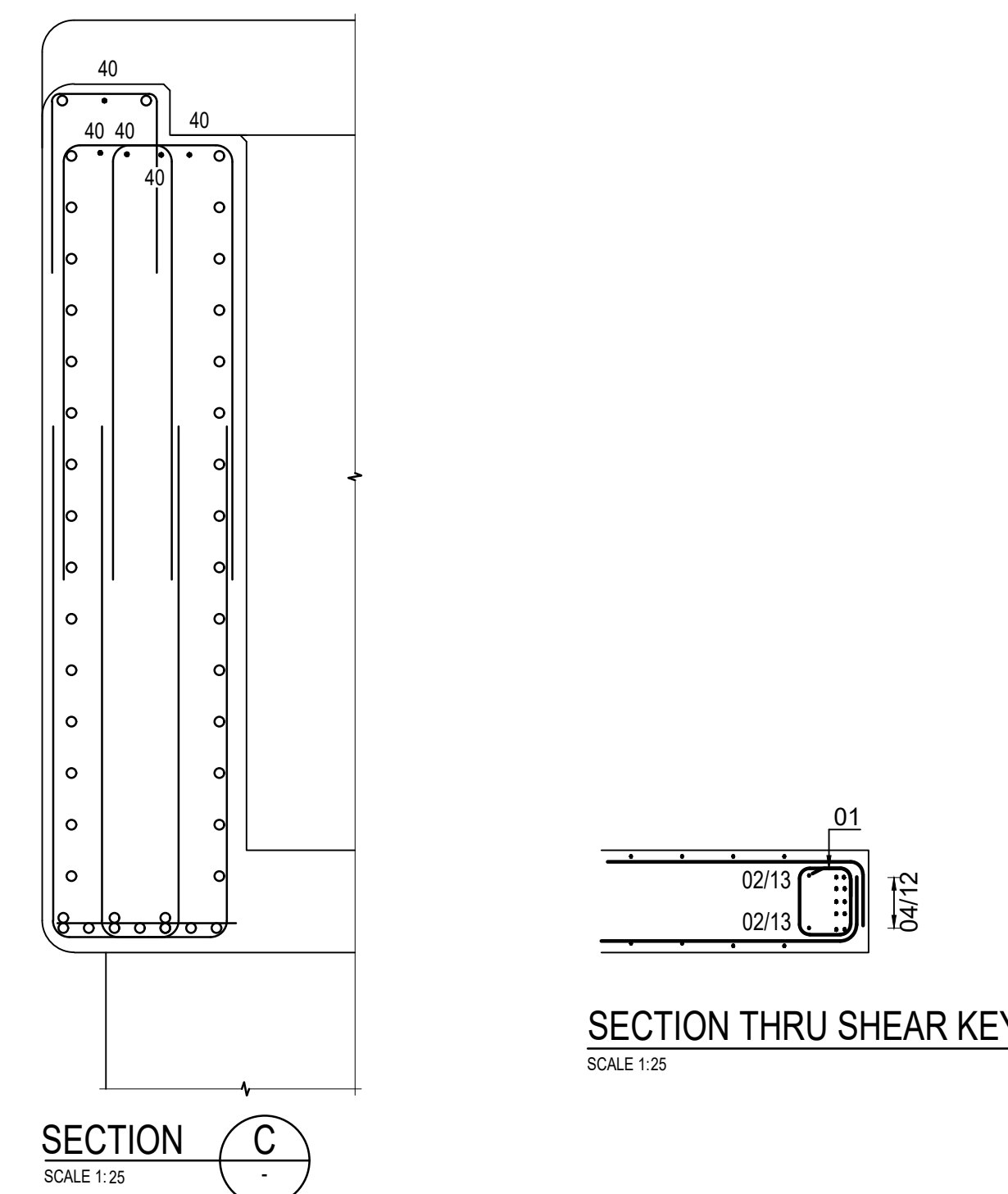
ELEVATION-E-E
SCALE 1:50



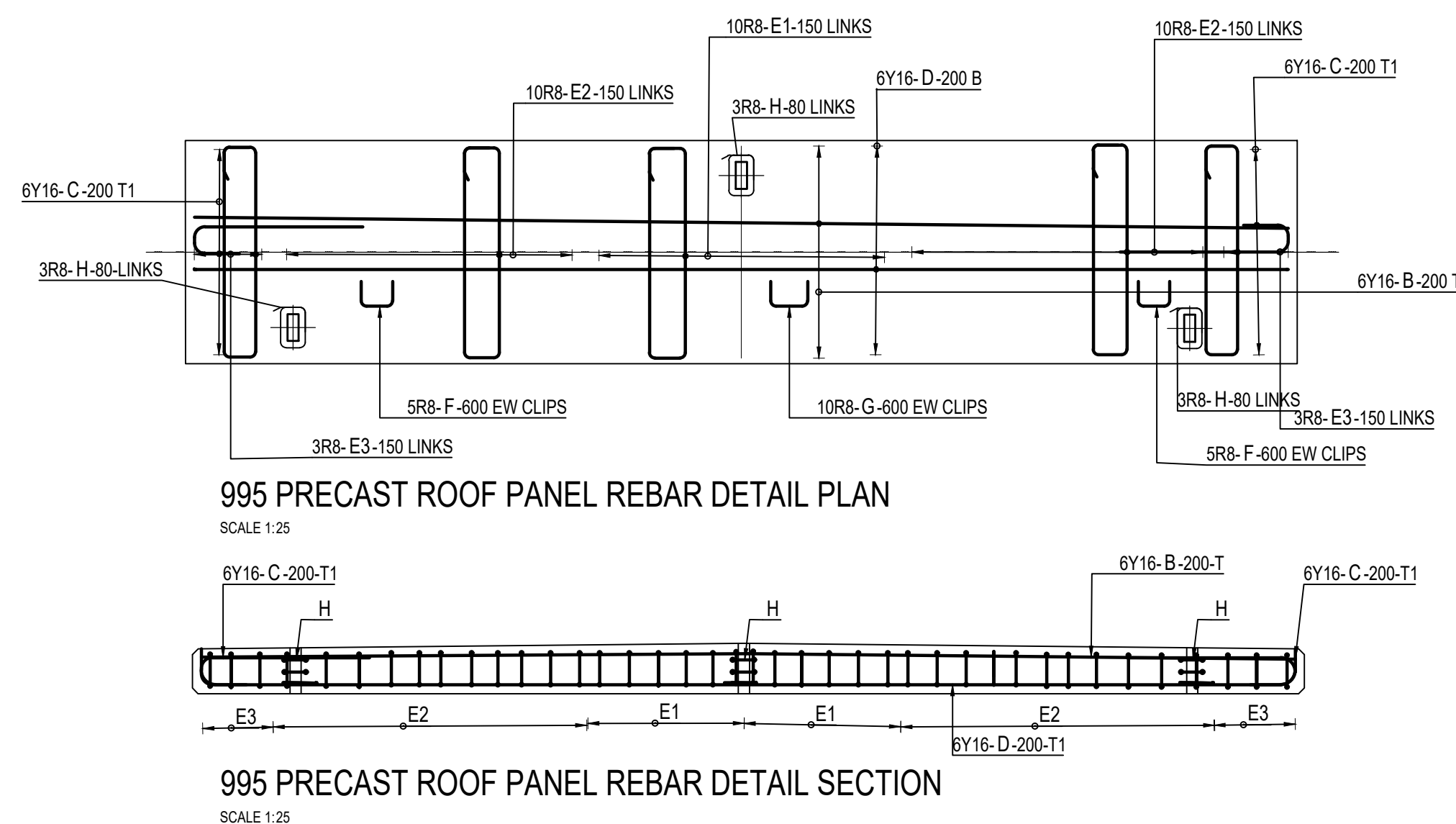
PORTAL END DETAIL



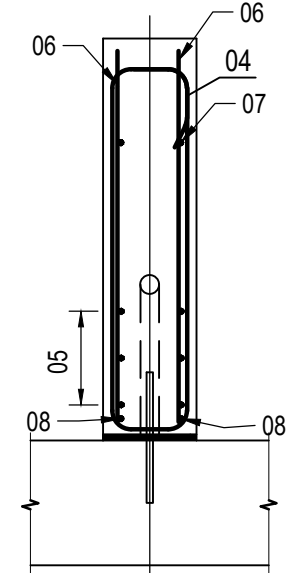
DECK 2,3,4,5,6 - BOTTOM REINFORCEMENT



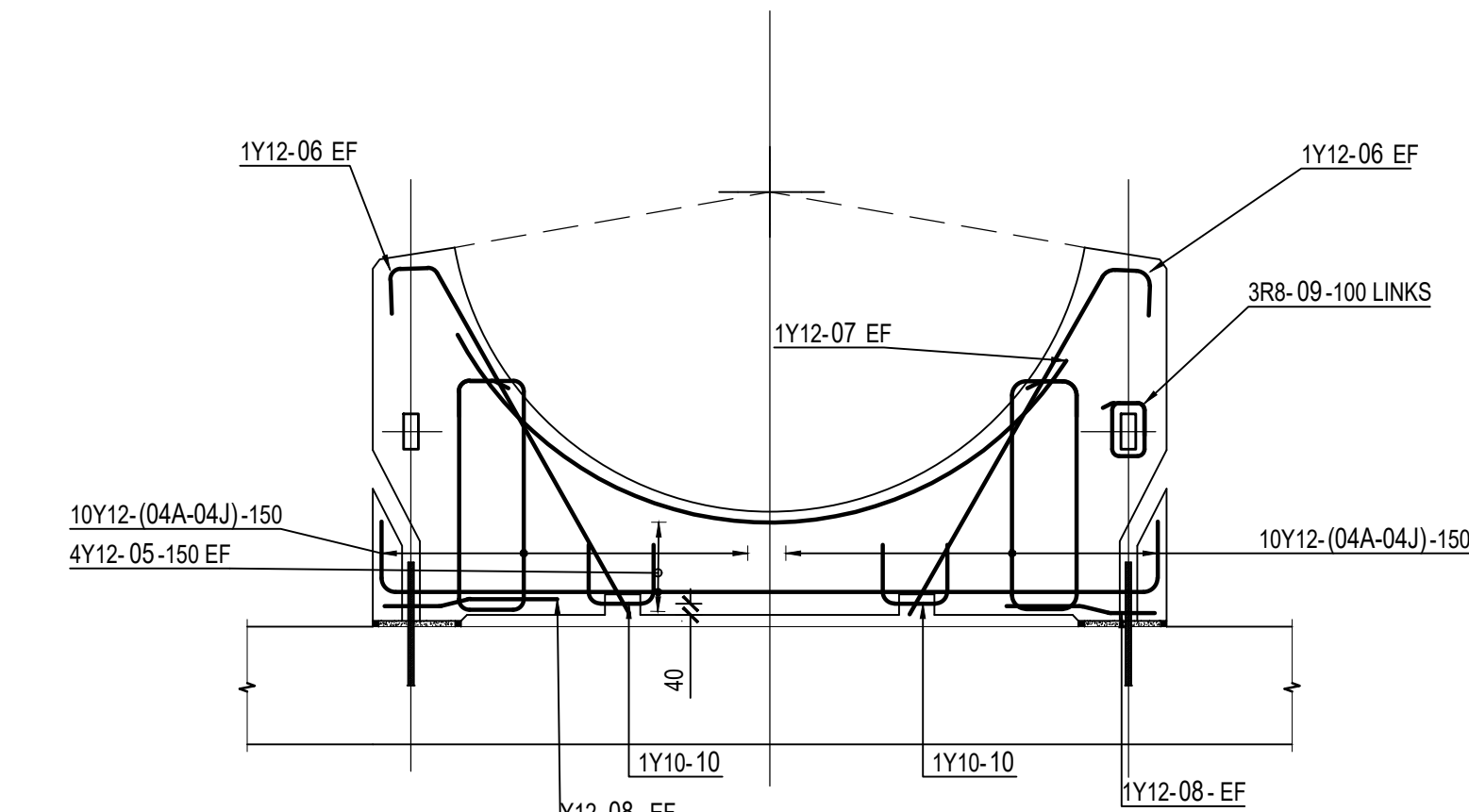
SECTION THRU SHEAR KEY



TYPICAL BEAM MAIN REBAR COVER DIMENSION



ELEVATION
SCALE 1:25



TYPICAL PIPE SUPPORT REBAR DETAIL
SCALE 1:25

NOTES: REINFORCED CONCRETE

1. THE APPLICABLE STANDARD SPECIFICATION IS SANS 12002 - 1982 WHICH SHOULD BE READ IN CONNECTION WITH THE VARIATIONS AND ADDITIONS CONTAINED IN THEMBA PROJECT SPECIFICATION FOR CONCRETE STRUCTURAL.
2. CONCRETE COVER TO REINFORCEMENT AND CONCRETE STRENGTH AS INDICATED BY COVER IS GIVEN TO THE NEAREST FACE. MINIMUM BAR COVER TO BE MAXIMUM OF BAR DIAMETER AND AS SHOWN BELOW. SPECIFIED COVER BE MAINTAINED USING CEMENT MORTAR COVER BLOCKS OR APPROVED PLASTIC SPACERS.

ELEMENT	CONCRETE STRENGTH AT 28 DAYS (MPa)	COVER mm
FOUNDATIONS	30	50
COLUMNS	30	45
BEAMS	30	45
SLABS	30	45
WALLS	30	45
	40	30

3. ALL AGGREGATE TO BE 19mm UNLESS OTHERWISE SPECIFIED.
4. CONCRETE DESIGN KINGS TO BE SUBMITTED TO ENGINEER FOR COMMENTS PRIOR TO CONSTRUCTION.
5. CURB TESTS TO BE CARRIED OUT ON SITE AND LOGGED WITH POSITION AND DATE. CURBS TO BE TAKEN FOR EACH TYPE OF ELEMENT, AT LEAST ONE SET DAILY AND AT LEAST ONE SET WEEKLY.
6. REINFORCEMENT TO BE IN ACCORDANCE WITH SANS 920 AND SHALL BE BENT IN ACCORDANCE WITH SANS 82.
7. ALL CAST IN ITEMS SHALL BE FREE OF OIL, GREASE, DIRT OR ANY OTHER MATERIAL WHICH MAY IMPAIR THE BOND WITH THE CONCRETE. CONTRIBUTE TO REDUCE TO ARCHITECTED SPECIALIST DRAWINGS FOR DETAILS POSITIONS OF OPENINGS, SLEEVES, CONDUITING, ETC. FOR STORMWATER, SEWERAGE AND OTHER SERVICES.
8. FOUNDATIONS HAVE BEEN DESIGNED FOR AN ALLOWABLE GROUND BEARING CAPACITY OF 1600 kPa.
9. ALL FOUNDATION EXCAVATIONS TO BE INSPECTED BY THE GEOTECHNICAL ENGINEER PRIOR TO CONCRETING.
10. REMOVAL OF FORMWORK TO BE IN ACCORDANCE WITH THE PROJECT SPECIFICATION IT IS THE CONTRACTORS RESPONSIBILITY FOR BACK-PROPPING ON MULTI-STORY SLAB CONSTRUCTION
11. ALL EXPOSED CORNERS TO BE CHAMFERED 25x25 TO U.N.

4. ALL AGGREGATE TO BE 19mm UNLESS OTHERWISE SPECIFIED.
5. CONCRETE DESIGN MIXES TO BE SUBMITTED TO ENGINEER FOR COMMENTS PRIOR TO CONSTRUCTION.
6. CUBE TESTS TO BE CARRIED OUT ON SITE AND LOGGED AND REPORTED TO THE ENGINEER TO BE TAKEN FOR EACH TYPE OF ELEMENT AT LEAST ONE SET DAILY AND AT LEAST ONE SET EVERY 50m³.
7. REINFORCEMENT TO BE IN ACCORDANCE WITH SANS 920 AND SHALL BE BENT IN ACCORDANCE WITH SANS 82.
8. ALL CAST IN SITU SHALL BE FREE OF OIL, GREASE, DIRT OR ANY OTHER CONTAMINANT AND SHALL BE KEPT CLEAN WITH THE CONCRETE. CONTRACTOR TO REFER TO ARCHITECT'S SPECIALS DRAWINGS FOR DETAILS/POSITIONS OF OPENINGS, SLEEVES, CONDUITING, ETC. FOR FORMMASTER, SERVICES AND OTHER SERVICES.
9. FOUNDATIONS HAVE BEEN DESIGNED FOR AN ALLOWABLE GROUND BEARING CAPACITY OF 1000 kPa.
10. ALL FOUNDATION EXCAVATIONS TO BE INSPECTED BY THE GEOTECHNICAL ENGINEER PRIOR TO CONCRETING.
11. REMOVAL OF FORMWORK TO BE IN ACCORDANCE WITH THE PROFORM SPECIFICATION IT IS THE CONTRACTOR'S RESPONSIBILITY TO BACK-PROPPING ON MULTY-STORY SLAB CONSTRUCTION.
12. ALL EXPOSED CORNERS TO BE CHAMFERED 25x25 O.U.

ORIGINAL PAGE SIZE

DRAWING No. REV

Page 10 of 10

3	9	3
---	---	---